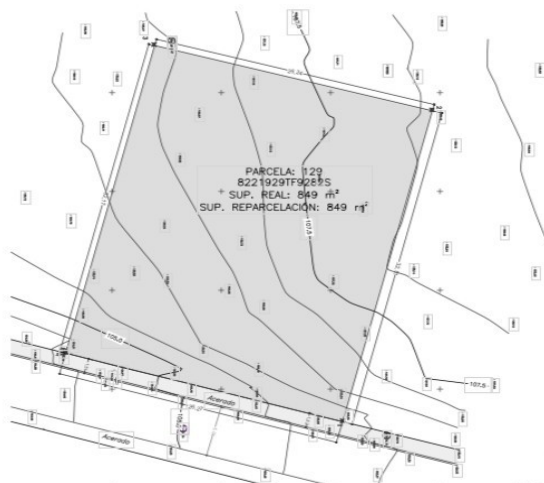
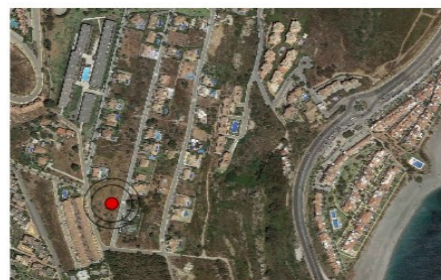


MANILVA, ES



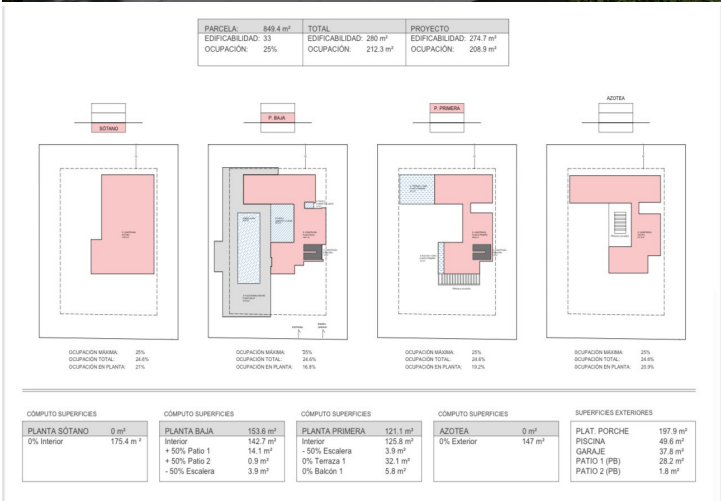
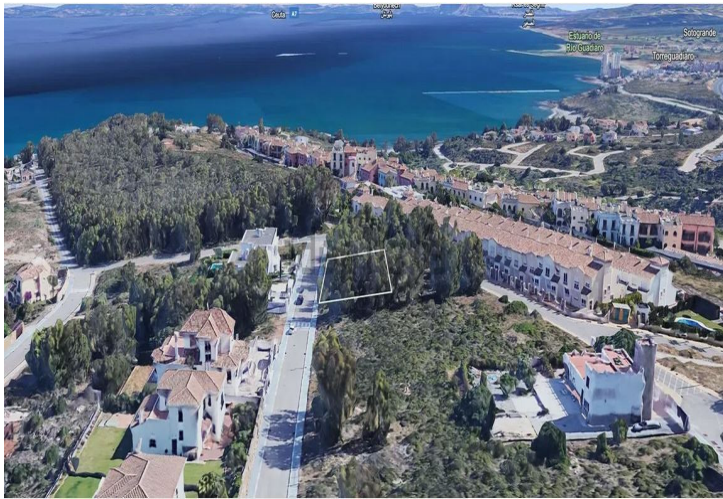
bedrooms — — bathrooms — — built — — terrace — —
dormitorios baños m2 constr. m2 terraza

SUPERB LAND FOR SALE TO BUILD YOUR DREAM HOME IN TUBALITAS STREET MANILVA!

Urban plot for sale in the urbanisation of La Paloma in Manilva, at just 500 meters from the beach and a 10 minute drive from Sotogrande Marina. With 849 m2 of land ready to build on, Town Hall approval and a project for a modern and spacious villa ready to go, this plot offers a potential buyer the opportunity build their dream home in o...

community — — garbage — — IBI 664 € for sale 299,950 €
comunidad month/mes basura year/año year/año en venta

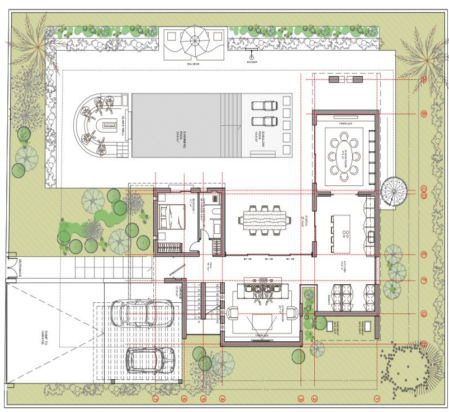
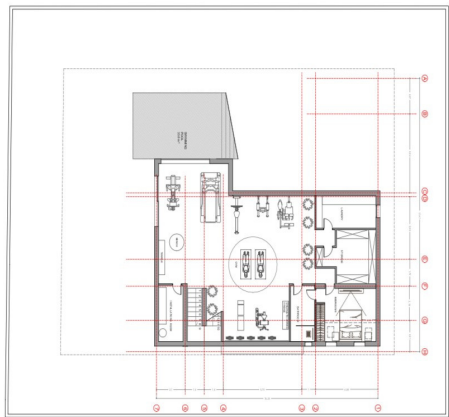
Sale price does not include costs or taxes. Additional costs for the buyer: inscription and notary fees, ITP 7% or, alternatively 10% VAT and AJD (1.2% on the purchase price) on new properties and subject to some requisites to be met. This info is subject to errors, omissions, modifications, prior sale or withdrawal from the market. Information sheet available, Decree 218/2005 Oct. 11th.



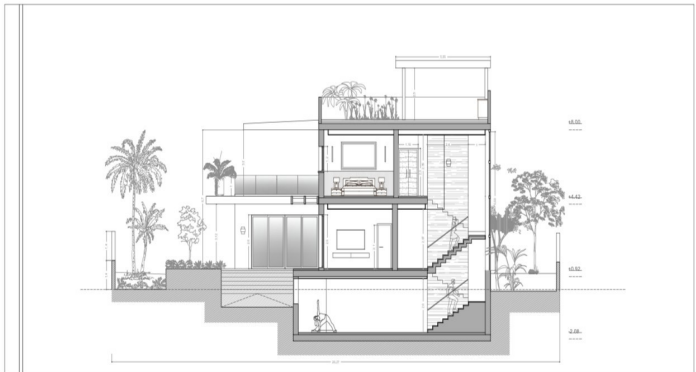
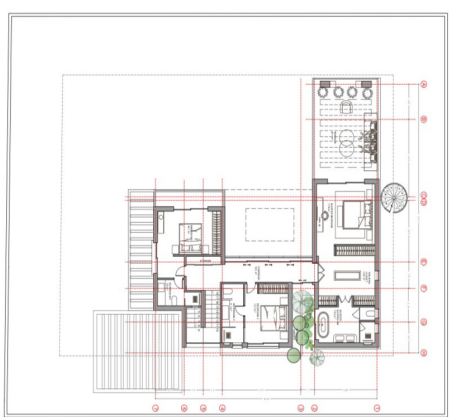


SUPERFICIES ÚTILES	
112.47	
HALL	10.14
SALA	22.14
COCINA	10.14
COMEDOR	20.14
DORM. 1	10.14
DORM. 2	10.14
BAN. 1	5.14
W.C. 1	1.14

PLANTA DE LA CASA	PLANTA DE LA CASA	PLANTA DE LA CASA	PLANTA DE LA CASA	PLANTA DE LA CASA
PLANTA DE LA CASA	PLANTA DE LA CASA	PLANTA DE LA CASA	PLANTA DE LA CASA	PLANTA DE LA CASA
PLANTA DE LA CASA	PLANTA DE LA CASA	PLANTA DE LA CASA	PLANTA DE LA CASA	PLANTA DE LA CASA
PLANTA DE LA CASA	PLANTA DE LA CASA	PLANTA DE LA CASA	PLANTA DE LA CASA	PLANTA DE LA CASA
PLANTA DE LA CASA	PLANTA DE LA CASA	PLANTA DE LA CASA	PLANTA DE LA CASA	PLANTA DE LA CASA



PLANTA DE LA CASA	PLANTA DE LA CASA	PLANTA DE LA CASA	PLANTA DE LA CASA	PLANTA DE LA CASA
PLANTA DE LA CASA	PLANTA DE LA CASA	PLANTA DE LA CASA	PLANTA DE LA CASA	PLANTA DE LA CASA
PLANTA DE LA CASA	PLANTA DE LA CASA	PLANTA DE LA CASA	PLANTA DE LA CASA	PLANTA DE LA CASA
PLANTA DE LA CASA	PLANTA DE LA CASA	PLANTA DE LA CASA	PLANTA DE LA CASA	PLANTA DE LA CASA
PLANTA DE LA CASA	PLANTA DE LA CASA	PLANTA DE LA CASA	PLANTA DE LA CASA	PLANTA DE LA CASA



Manilva, ES

Superb land for sale to build your dream Home in Tubalitas Street Manilva!

Urban plot for sale in the urbanisation of La Paloma in Manilva, at just 500 meters from the beach and a 10 minute drive from Sotogrande Marina. With 849 m2 of land ready to build on, Town Hall approval and a project for a modern and spacious villa ready to go, this plot offers a potential buyer the opportunity build their dream home in one of the most beautiful parts of the Costa del Sol. Get in touch with Anna-Kaisa for more information +34 663 504 111 or ak@bo-homes.com

Basic features

- Total land area 849 m²
- Buildable area 280 m² PLUS basement that will natural light as the plot is sloped so you will have third usable floor.
- Access by town street
- 10 km from the nearest town centre

Land type

- Urban land lot
- Certified for single family home (houses)
- 3 buildable floors

Amenities

- Water
- Electricity
- Sewer system
- Street lighting
- Pavements.

Reference	BO10027	Beds	--	Built m2	--
Type	Grondstukken	Baths	--	Interior m2	--
Location	Manilva, ES	En-suite Baths	--	Terrace m2	--
		Guest Toilets	--	Plot m2	849
		Pax	--		
Pool		Community	--	Levels	--
Garden		Garbage	--	Floor	--
Garage		IBI	664 €/year	Orientation	--
Parking slots	--	Construct Year	--	EPC	In Progress

For sale

299,950 €

Sale price does not include costs or taxes. Additional costs for the buyer: inscription and notary fees, ITP 7% or, alternatively 10% VAT and AJD (1.2% on the purchase price) on new properties and subject to some requisites to be met. This info is subject to errors, omissions, modifications, prior sale or withdrawal from the market. Information sheet available, Decree 218/2005 Oct. 11th.

BO10027

Manilva, ES

Referencia	BO10027	Dorm.	--	Constr. m2	--
Tipo	Grondstukken	Baños	--	Interior m2	--
Localidad	Manilva, ES	Baños en-suite	--	Terraza m2	--
		Baños de invit.	--	Parcela m2	849
		Pax	--		
Piscina		Comunidad	--	Nº plantas	--
Jardín		Basura	--	Planta	--
Garaje		IBI	664 €/year	Orientación	--
Plazas aparcam.	--	Año Constr.	--	CEE	In Progress

En venta

299,950 €

Precio no incluye gastos ni tributos. Gastos adicionales para el comprador: registro y notaría, ITP 7% o alternatively 10% IVA y AJD (1,2% sobre precio de compra) en propiedades nuevas y sujeto al cumplimiento de ciertos requisitos. Información sujeta a errores, omisiones, modificaciones, venta previa o retirada del mercado. Ficha informativa a su disposición, Decreto 218/2005 de 11/Oct.