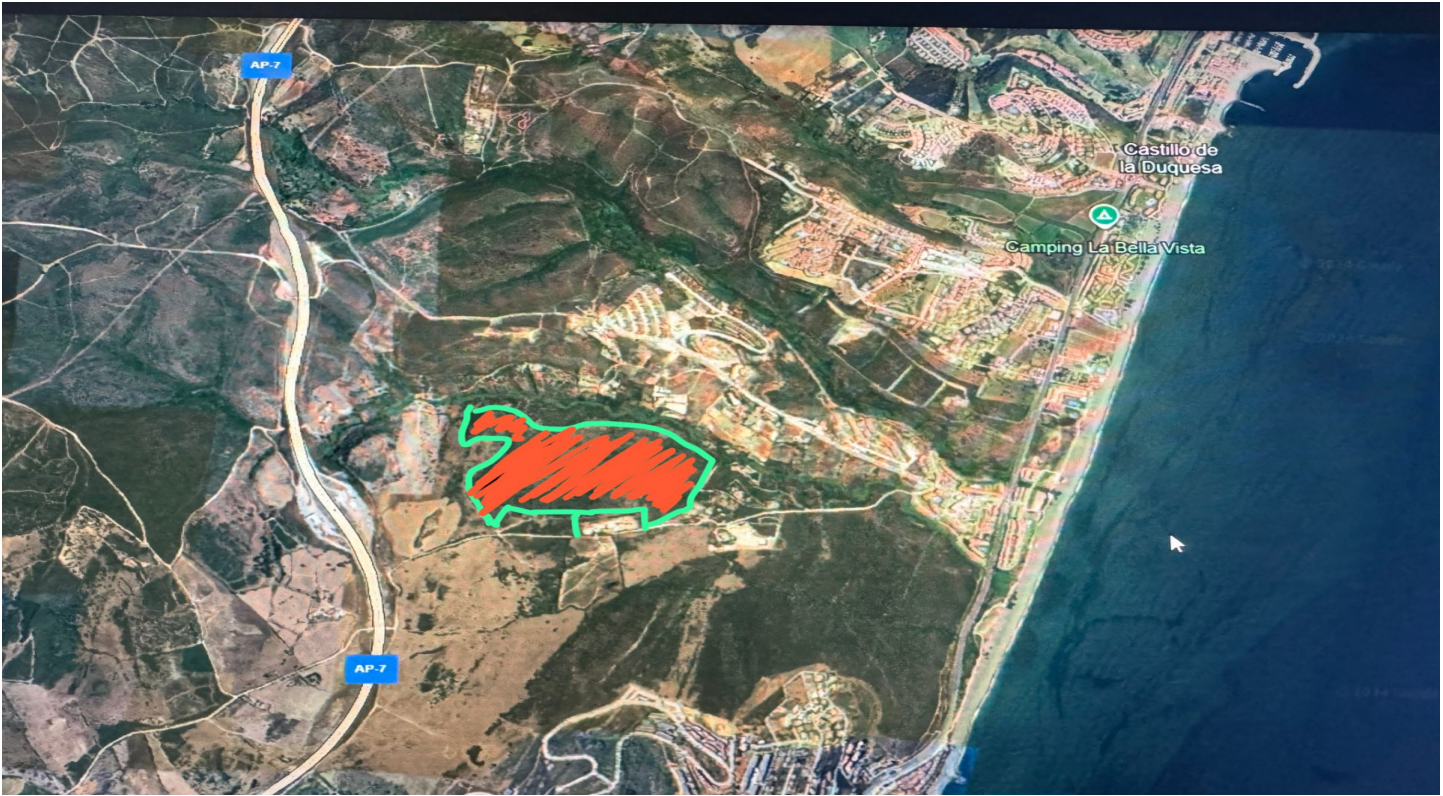




MARTAGINA, MANILVA, ES



bedrooms — — bathrooms — — built — — terrace — —  
dormitorios                      baños                      m2 constr.                      m2 terraza

AN EXCEPTIONAL ESTATE FOR SALE IN MARTAGINA, MANILVA

An exceptional estate for sale in Martagina, Manilva, located just minutes from Sotogrande. This large plot boasts a prime location with sweeping views of the Mediterranean Sea. Set on a spacious plot, this property is ideally suited for large-scale educational, healthcare, sports, leisure, and other developments—an outstanding investme...

community — —      garbage — —      IBI — —      for sale 10,200,000 €  
comunidad month/mes      basura year/año      year/año      en venta

Sale price does not include costs or taxes. Additional costs for the buyer: inscription and notary fees, ITP 7% or, alternatively 10% VAT and AJD (1.2% on the purchase price) on new properties and subject to some requisites to be met. This info is subject to errors, omissions, modifications, prior sale or withdrawal from the market. Information sheet available, Decree 218/2005 Oct. 11th.





Martagina, Manilva, ES

An exceptional estate for sale in Martagina, Manilva

An exceptional estate for sale in Martagina, Manilva, located just minutes from Sotogrande. This large plot boasts a prime location with sweeping views of the Mediterranean Sea. Set on a spacious plot, this property is ideally suited for large-scale educational, healthcare, sports, leisure, and other developments—an outstanding investment opportunity in a highly desirable area brimming with potential. Strategically positioned near Sotogrande, this estate offers easy access to major routes and amenities while providing a tranquil, scenic setting. Its proximity to the Mediterranean ensures stunning sea views and a serene natural backdrop, blending convenience with relaxation. Perfect for Large-Scale Projects: Spanning 34.2 hectares, this expansive and adaptable property is perfect for a variety of projects. From educational institutions to healthcare complexes, premier sports facilities, or leisure and entertainment hubs, the opportunities are vast. Its prime location and breathtaking views make it an ideal foundation for visionary developments.

Reference	R4870	Beds	--	Built m2	--
Type	Tomter och Marker	Baths	--	Interior m2	--
Location	Martagina, Manilva, ES	En-suite Baths	--	Terrace m2	--
		Guest Toilets	--	Plot m2	336431
		Pax	--		
Pool		Community	--	Levels	--
Garden		Garbage	--	Floor	--
Garage		IBI	--	Orientation	--
Parking slots	--	Construct Year	--	EPC	In Progress

For sale  
10,200,000 €

Sale price does not include costs or taxes. Additional costs for the buyer: inscription and notary fees, ITP 7% or, alternatively 10% VAT and AJD (1.2% on the purchase price) on new properties and subject to some requisites to be met. This info is subject to errors, omissions, modifications, prior sale or withdrawal from the market. Information sheet available, Decree 218/2005 Oct. 11th.



Martagina, Manilva, ES

Referencia	R4870	Dorm.	--	Constr. m2	--
Tipo	Tomter och Marker	Baños	--	Interior m2	--
Localidad	Martagina, Manilva, ES	Baños en-suite	--	Terraza m2	--
		Baños de invit.	--	Parcela m2	336431
		Pax	--		
Piscina		Comunidad	--	Nº plantas	--
Jardín		Basura	--	Planta	--
Garaje		IBI	--	Orientación	--
Plazas aparcam.	--	Año Constr.	--	CEE	In Progress

En venta  
10,200,000 €

Precio no incluye gastos ni tributos. Gastos adicionales para el comprador: registro y notaría, ITP 7% o alternatively 10% IVA y AJD (1,2% sobre precio de compra) en propiedades nuevas y sujeto al cumplimiento de ciertos requisitos. Información sujeta a errores, omisiones, modificaciones, venta previa o retirada del mercado. Ficha informativa a su disposición, Decreto 218/2005 de 11/Oct.